

PUBLIC ALLEY CLOSED AND EASEMENT ESTABLISHED SQUARE 748

THE ALLEY SHOWN THUS: IS CLOSED AND TITLE VESTS AS SHOWN UPON RECORDATION OF THIS PLAT.

THE UNRESTRICTED SURFACE ACCESS EASEMENT SHOWN THUS: IS ESTABLISHED AND RECORDED AS INSTRUMENT # _____ ON _____, 20____ AT THE DISTRICT OF COLUMBIA RECORDER OF DEEDS OFFICE.

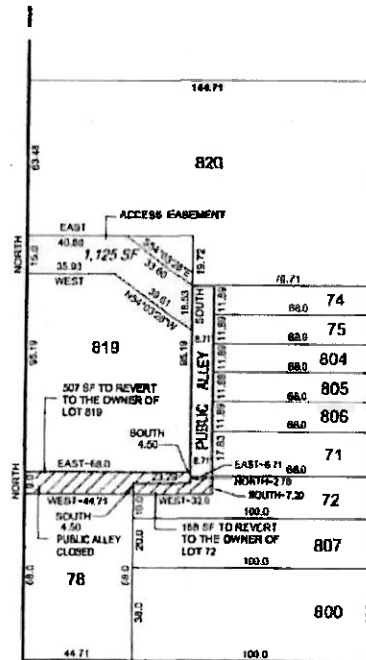
OFFICE OF THE SURVEYOR, D.C.

_____, 2017

I CERTIFY THAT THIS PLAT IS CORRECT AND IS RECORDED.

SURVEYOR, D.C.

CONGRESS STREET, N.E.



3rd STREET, N.E.

L STREET, N.E.

SURVEYOR'S OFFICE, D.C.

Made for: MARY CAROLYN BROWN
 Drawn by: A.S. Checked by: _____
 Record and computations by: B. MYERS
 Recorded at: _____
 Recorded in Book _____ Page _____ 82-16-07811
 Scale: 1 inch = 20 feet File No. 16-21108